

Installation Instructions

Please Read Before Installing

Description

The HWI-SV-5BI and HWI-SV-5BNI keypads are for interfacing a *HomeWorks Interactive* system with a *Sivoia* Motorized Window Treatment System. The keypad buttons can activate or program *Sivoia* Motorized Window Treatment System presets as well as raise or lower window treatments. When used to interface with a *HomeWorks Interactive* system, the *HomeWorks Interactive* Utility can be used to program *HomeWorks Interactive* keypads to activate the presets or raise/lower features that are available on the keypad.

The keypad can control up to 64 *Sivoia* Motorized Window Treatments. All window treatments connected to the keypad must operate together as a single group. *Sivoia* keypads or IR transmitters which control individual window treatments or subgroups may not be used on the same *Sivoia* system.

Button Functionality

Pressing the Open, Close, or Preset button will cause the window treatments to move to the selected position. Pressing the same Open, Close, or Preset button a second time while the window treatments are moving will stop the window treatments. While pressing the Raise/Lower button the window treatments will raise or lower.

Open - Pressing the Open button once will cause the window treatments to move to the open position.

Presets - Pressing one of the preset buttons (Preset 1, Preset 2, or Preset 3) will cause the window treatments to go to their programmed preset level.

Close - Pressing the Close button once will cause the window treatments to move to the close position.

Raise - Holding the Raise button will cause the window treatments to move towards the open position. Releasing the Raise button will cause the window treatments to stop.

Lower - Holding the Lower button will cause the window treatments to move towards the close position. Releasing the Lower button will cause the window treatments to stop.

Note: Open, Preset, Close, Raise and Lower buttons always affects all *Sivoia* Motorized Window Treatments that are connected to the keypad via the *Sivoia* communication link.

HomeWorks Interactive[™] to Sivoia[®] Keypad

HWI-SV-5BNI

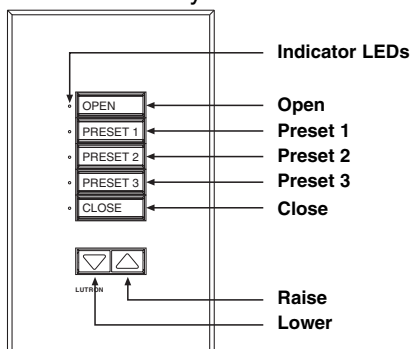
5 Button with Raise/Lower Architectural-Style

HWI-SV-5BI

5 Button with Raise/Lower Decorator-Style

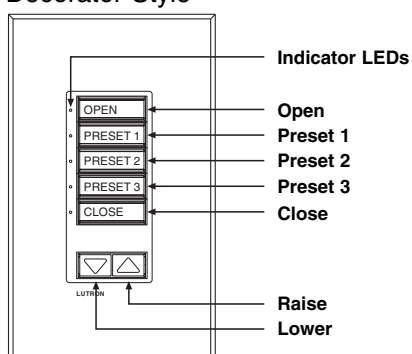
HWI-SV-5BNI Keypad

Architectural-Style



HWI-SV-5BI Keypad

Decorator-Style



LED Functionality

An indicator LED is ON when **all** of the *Sivoia* Motorized Window Treatments in the group are at the corresponding Open, Close, or Preset position. Otherwise, the indicator LED is OFF.

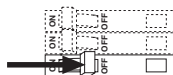
Preset Programming

Preset 1, 2 and 3 are programmable *Sivoia* presets. Preset positions are stored in the *Sivoia* Motorized Window Treatments. All *HomeWorks Interactive* and *Sivoia* keypads/IR transmitters command the *Sivoia* Motorized Window Treatments to travel to the same set of presets. Set each preset as follows:

- Adjust each window treatment to desired position.
 - To adjust window treatments individually, use the Open/Close buttons on the *Sivoia* Motor Drive Unit.
 - To adjust all window treatments simultaneously, use the Raise/Lower buttons on the keypad.
- Press and hold the desired preset button for a minimum of 4 seconds. "Pr" will flash on the Motor Drive Unit display and the button LED will flash on the keypad indicating that the preset has been saved.

Installation

1. Disconnect power to the keypads by turning off all circuit breakers or remove fuses supplying power to the *HomeWorks Interactive* processor, keypad link auxiliary power supply and all *Sivoia* Motorized Window Treatments.



Wiring with power ON may result in personal injury.

2. Remove the faceplate and button assembly. For the decorator-style opening model and multigang applications, the faceplate adapter must be removed before the button assembly can be removed. For the architectural-style opening model, the faceplate adapter need not be removed. See Figure 2.
3. **Address Keypad.** Assign a unique *HomeWorks Interactive* keypad address to each keypad using the DIP switch settings. See Figure 2 for DIP switch location, and Figure 3 for DIP switch settings. Be sure to record the address for future programming purposes.
Note: No *Sivoia* system address is needed on this keypad.
4. Strip insulation on all wires to 3/8" (10mm). Each terminal will accept one or two No. 18-gauge (1.0mm²) wires.
5. Unplug terminal blocks from the keypad circuit board.
6. Connect wiring to terminal blocks as shown in Figures 1 and 4.
7. Plug the terminal blocks back onto the circuit board. Be sure to orient the terminal blocks correctly.
8. Mount keypad as shown in Figure 5. **Do not over tighten mounting screws.**
9. Install button assembly, adapter, and faceplate.
10. Restore power to the *HomeWorks Interactive* panel and *Sivoia* Motorized Window Treatments.



Figure 1: Rear View of Keypad

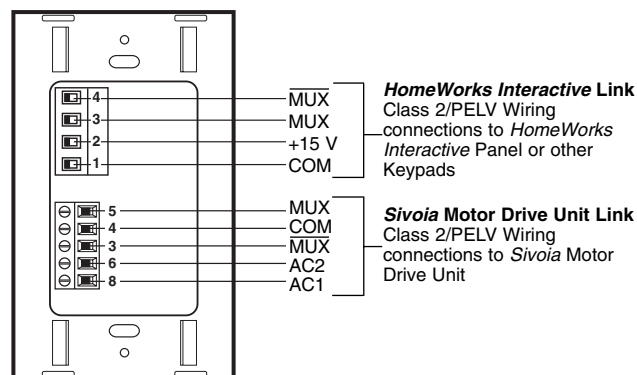


Figure 2: Remove Faceplate and Button Assembly

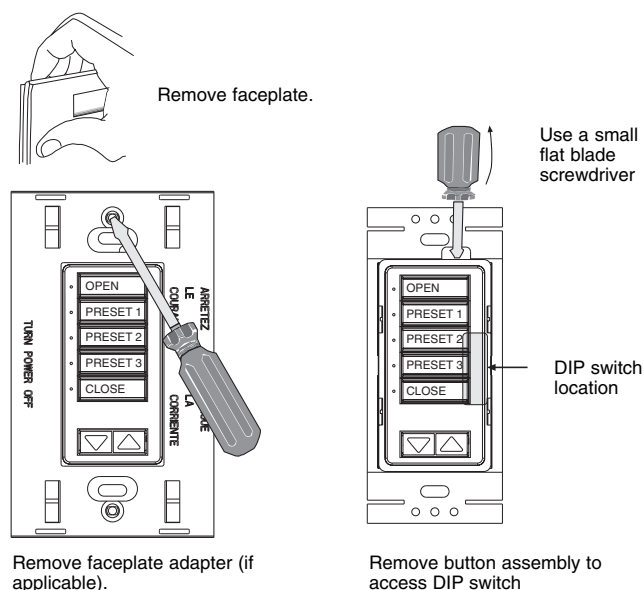


Figure 3: HomeWorks Interactive Keypad Address Selection Chart

HomeWorks Interactive
Keypad Address No.

Switch Setting	Switch Setting	Switch Setting	Switch Setting
1 2 3 4 5 6	1 2 3 4 5 6	1 2 3 4 5 6	1 2 3 4 5 6
1	9	17	25
2	10	18	26
3	11	19	27
4	12	20	28
5	13	21	29
6	14	22	30
7	15	23	31
8	16	24	32

Example: Turning Switch #1 ON.

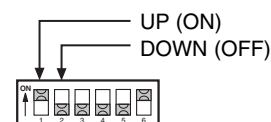
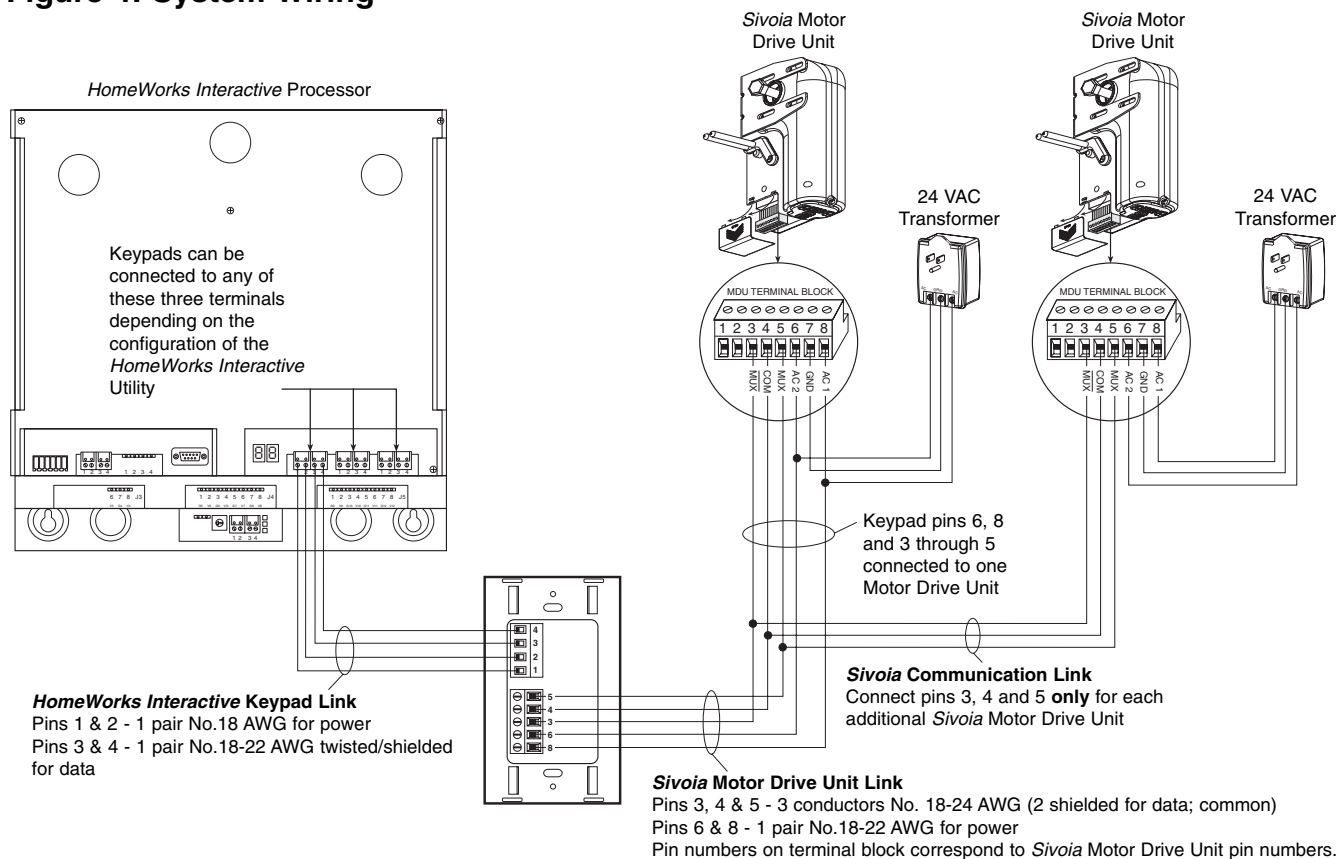


Figure 4: System Wiring

Sivoia Motorized Window Treatments that are controlled by the same keypad must have their settings programmed with the following parameters:

- Sivoia Link address must be unique for each MDU.
- Room address for each MDU must be set to "01" (default).
- Infrared address for each MDU must be set to "1F" (default).
- Control station setting for each MDU must be "00" (default).

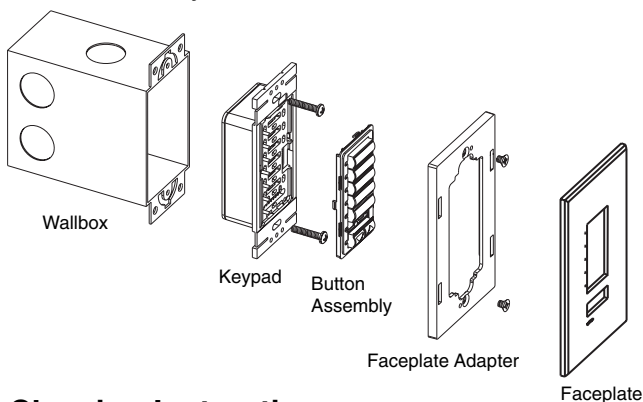
Refer to the Sivoia Motorized Window Treatment instruction sheets for more information on programming Sivoia Motorized Window Treatments.

Notes:

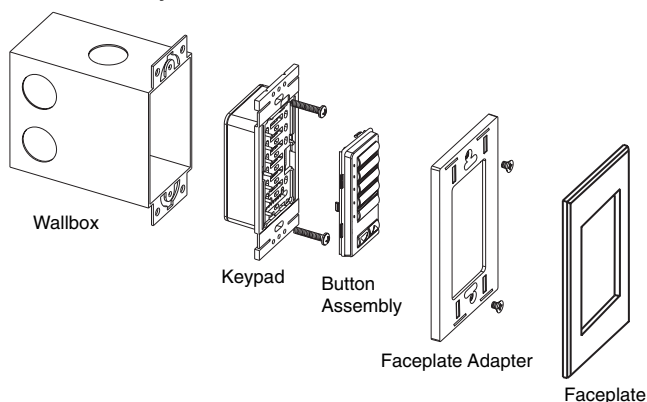
- All Sivoia Motorized Window Treatments connected to the keypad must be set up to operate as a single group and contain no subgroups.
- Some Sivoia IR transmitters will not provide proper feedback to a HomeWorks Interactive processor. Contact Lutron for the approved product list.
- Do not use Sivoia keypads designed to control individual window treatments.

Figure 5: Mounting Diagram

Architectural-Style



Decorator-Style

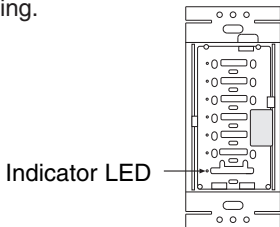


Cleaning Instructions

To clean, wipe with a clean damp cloth. **DO NOT** use any chemical cleaning solutions.

HomeWorks Interactive to Sivoia System Troubleshooting

Keypad is working properly when Indicator LEDs light up as buttons are pressed.

Symptom	Cause and Action
Indicator LEDs don't light up when buttons are pushed.	<ul style="list-style-type: none"> • Power is not present at keypad. • Make sure <i>Sivoia</i> Motor Drive Unit is powered up. • Check for 24VAC between pins 6 and 8 on the <i>Sivoia</i> link terminal block on the keypad. • Remove terminal blocks from back of keypad, check connections and replace. See Figure 1. • Check for correct orientation of terminal blocks.
Indicator LED behind faceplate/button assembly at bottom left is flashing. 	<ul style="list-style-type: none"> • Keypad is working properly but is not communicating with the <i>HomeWorks Interactive</i> processor. • Verify that the <i>HomeWorks Interactive</i> processor is running. • Check that keypad wires on the <i>HomeWorks Interactive</i> keypad link are properly connected. • Check that keypad link is plugged into correct terminal block at <i>HomeWorks Interactive</i> processor. • Verify that link is configured for <i>HomeWorks Interactive</i> keypads in the <i>HomeWorks Interactive</i> Utility.
Keypad works locally, but not with <i>HomeWorks Interactive</i> . Bottom left LED behind faceplate is not flashing.	<ul style="list-style-type: none"> • Keypad is working properly but is not communicating with the <i>HomeWorks Interactive</i> processor. • Check that the 6th DIP switch is in the ON position. See Figure 3. • Refer to troubleshooting steps listed in the section above concerning the bottom left LED behind the faceplate is flashing.
Indicator LEDs light and stay lit when buttons are pressed, but the <i>Sivoia</i> system isn't responding. Raise/Lower buttons work.	<ul style="list-style-type: none"> • Check wiring connections for <i>Sivoia</i> communication link. • Check if <i>Sivoia</i> Motor Drive Unit is already at that preset. • Check if presets are able to be reprogrammed.
Indicator LEDs light and stay lit when buttons are pressed, but the <i>Sivoia</i> system isn't responding. Raise/Lower buttons do not work.	<ul style="list-style-type: none"> • Check wiring connection for <i>Sivoia</i> communication link. • Check <i>Sivoia</i> Motor Drive Units for proper address settings. Refer to address setting information in Figure 4.
Keypads do not program presets.	<ul style="list-style-type: none"> • Check preset lockout function on <i>Sivoia</i> Motor Drive Units. Refer to <i>Sivoia</i> Motorized Window Treatment instruction sheets.
Indicator LEDs do not update when <i>Sivoia</i> Motor Drive Units move due to a <i>Sivoia</i> keypad or IR transmitter.	<ul style="list-style-type: none"> • Check that the <i>Sivoia</i> control is a <i>Sivoia</i> group keypad or IR transmitter. • Check <i>Sivoia</i> Motor Drive Units for proper address settings. Refer to address setting information in Figure 4.

LIMITED WARRANTY

Lutron will, at its option, repair or replace any unit that is defective in materials or manufacture within two years after purchase. For warranty service, return unit to place of purchase or mail to Lutron at 7200 Suter Rd., Coopersburg, PA 18036-1299, postage pre-paid. Telephone the Lutron Technical Support Center toll free at 800-523-9466. After the two year period, a pro-rated warranty applies to this product until eight years after the purchase. For more information regarding this warranty contact your Lutron representative.

THIS WARRANTY IS IN LIEU OF ALL OTHER EXPRESS WARRANTIES, AND THE IMPLIED WARRANTY OF MERCHANTABILITY IS LIMITED TO TWO YEARS FROM PURCHASE. THIS WARRANTY DOES NOT COVER THE COST OF INSTALLATION, REMOVAL OR REINSTALLATION, OR DAMAGE RESULTING FROM MISUSE, ABUSE, OR IMPROPER OR INCORRECT REPAIR, OR DAMAGE FROM IMPROPER WIRING OR INSTALLATION. THIS WARRANTY DOES NOT COVER INCIDENTAL OR CONSEQUENTIAL DAMAGES. LUTRON'S LIABILITY ON ANY CLAIM FOR DAMAGES ARISING OUT OF OR IN CONNECTION WITH THE MANUFACTURE, SALE, INSTALLATION, DELIVERY, OR USE OF THE UNIT SHALL NEVER EXCEED THE PURCHASE PRICE OF THE UNIT.

This warranty gives you specific legal rights, and you may also have other rights which vary from state to state. Some states do not allow limitations on how long an implied warranty lasts, so the above limitation may not apply to you. Some states do not allow the exclusion or limitation of incidental or consequential damages, so the above limitation or exclusion may not apply to you. This product may be covered by one or more of the following U.S. patents: 4,835,343; 4,924,349; 5,180,886; 6,313,588; 6,346,781; D422,567; D436,930; D453,742 and corresponding foreign patents. U.S. and foreign patents pending. Lutron, Sivoia, and HomeWorks are registered trademarks and HomeWorks Interactive is a trademark of Lutron Electronics Co., Inc.
© 2002 Lutron Electronics Co., Inc.

Technical and Sales Assistance

If you need assistance, call the toll-free **Lutron Technical Support Center**. Please provide exact model number when calling.

(800) 523-9466 (U.S.A., Canada and the Caribbean)

Other countries call:

Tel: (610) 282-3800

Fax: (610) 282-3090

Visit our Web site at www.lutron.com

Lutron Electronics Co., Inc.

7200 Suter Road

Coopersburg, PA 18036-1299

Made and printed in the U.S.A. 8/02 P/N 040-189 Rev. B

LUTRON®