

Installation Instructions

Remote Power Module, 4 Circuits, 120V

1. Turn power off to all feeds to the panel.



Danger - This panel may be fed by multiple circuits. Locate and lock each supply circuit breaker in the off position before proceeding.

2. Install the module's wires into the appropriate terminal blocks and secure using 3.5 to 5 in-lbs (.4 to .56 Nm) of torque (See Figure 1).



Danger - Modules are not approved to be used anywhere other than in a HomeWorks or HomeWorks Interactive panel (HW-PNL8, HWI-PNL-8 or HWI-PNL-5).

3. Mount the module into the rough-in panel.

Start with position 1, then 2, then 3, etc. Do not overtighten screws, torque to 20 in-lbs (2.25 Nm) maximum For HomeWorks Interactive systems, refer to Figure 2. For original HomeWorks, refer to Figure 3.

4. Connect the control harness (provided with the HomeWorks processor, HomeWorks Interactive processor or Module Interface) to the module at the four pin connector.

5. Check that all bypass jumpers are installed. They will distribute power to each load and should not be removed until after all modules and loads are fully installed and proven.

6. Turn on input feed circuit breakers and check that they do not trip. Each module is rated for a total combined maximum load of 16A (1920 Watts).



Danger - Only turn on input feed circuit breakers when load wiring is complete and it is safe to have power applied.

7. For any feed circuit breaker that trips, locate the shorted load and resolve the wiring problem before proceeding.

8. Turn power OFF to all feeds to the panel.

9. Loosen all five screws on the bypass jumpers.

10. Remove and store the bypass jumpers for possible later use.



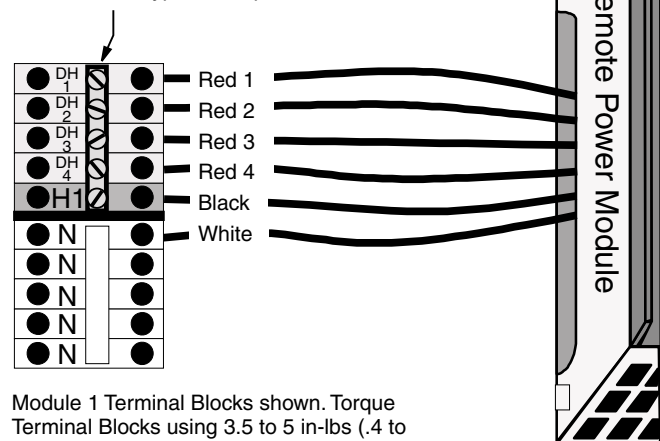
Caution - Bypass jumpers must be reused whenever a circuit breaker is turned OFF to work on a load. Damage caused by short circuits and miswiring **IS NOT COVERED** by the product warranty.

11. Turn ON input feed circuit breakers and check that they do not trip.

12. For any feed circuit breaker that trips, locate the shorted load and resolve the wiring problem before proceeding.

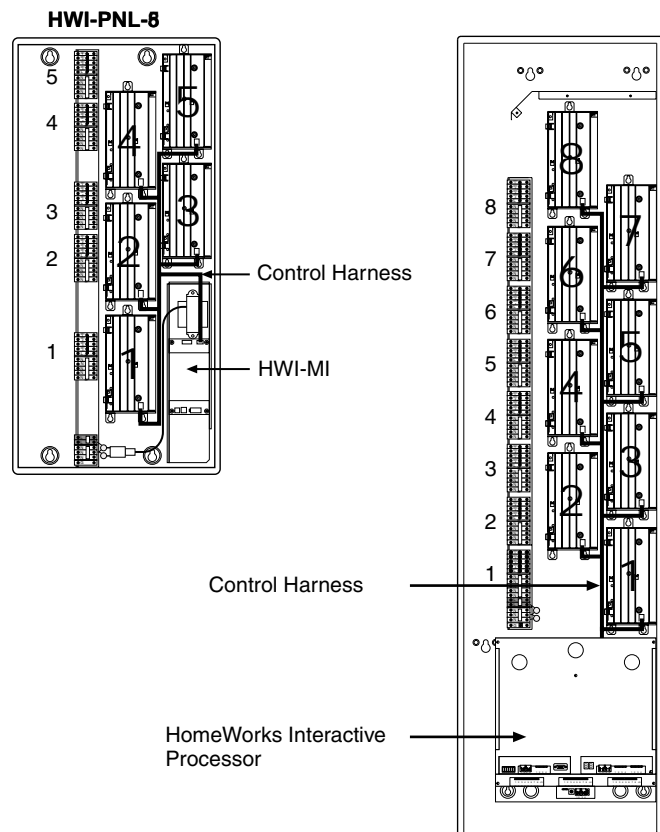
Figure 1 - Remote Power Module Wiring

Five Position Bypass Jumper



Module 1 Terminal Blocks shown. Torque Terminal Blocks using 3.5 to 5 in-lbs (.4 to .56 Nm). DO NOT overtighten.

Figure 2 - Mounting Location in HWI-PNL-5 or HWI-PNL-8



13. Use the Address Switch to check the operation of each module. See Table 1.
14. Set each address switch to match the module's position (set module 1's address switch to 1, etc.).
15. After the HomeWorks or HomeWorks Interactive system is programmed, check each module's diagnostic LED (light emitting diode). See Table 2.

Table 1 - Address Switch Operation

Position	Proper Module Output / Purpose
0	Internal relay ON, no output to load
1-8	Address for normal operation
9,A	Not Used
B	Red 1's output ON Full / Use to check wiring
C	Red 2's output ON Full / Use to check wiring
D	Red 3's output ON Full / Use to check wiring
E	Red 4's output ON Full / Use to check wiring
F	All outputs ON Full / Use for temporary lighting

Table 2 - Diagnostic LED Status

LED Status	Possible Cause
Off	No Power or Defective Module
1 blink per sec.	Normal Operation "Heartbeat"
1 blink per 7 seconds "Lighthouse"	Not communicating with processor: open control harness; module receiving invalid load type; module set on invalid or diagnostic address; system not properly configured or addressed in programming software
4 blinks, then 4 second pause, then 4 blinks...	Module in override mode

World Headquarters

Lutron Electronics Co., Inc.
 7200 Suter Road
 Coopersburg, PA 18036-1299, U.S.A.
TOLL FREE: (800) 523-9466 (U.S.A., Canada and the Caribbean)
 Tel: (610) 282-3800; International 1 610 282-3800
 Fax: (610) 282-3090; International 1 610 282-3090

European Headquarters

Lutron EA LTD
 Lutron House
 6 Sovereign Close
 Wapping
 London, E1 9HW England
FREEPHONE: (0800) 28 21 07 (U.K.)
 Tel: (171) 702-0657; International 44 171 702-0657
 Fax: (171) 480-6899; International 44 171 480-6899

Technical and Sales Assistance

If you need assistance, call the toll-free **Lutron Technical Assistance Hotline**. Please provide exact model number when calling.

(800) 523-9466 (U.S.A., Canada and the Caribbean)

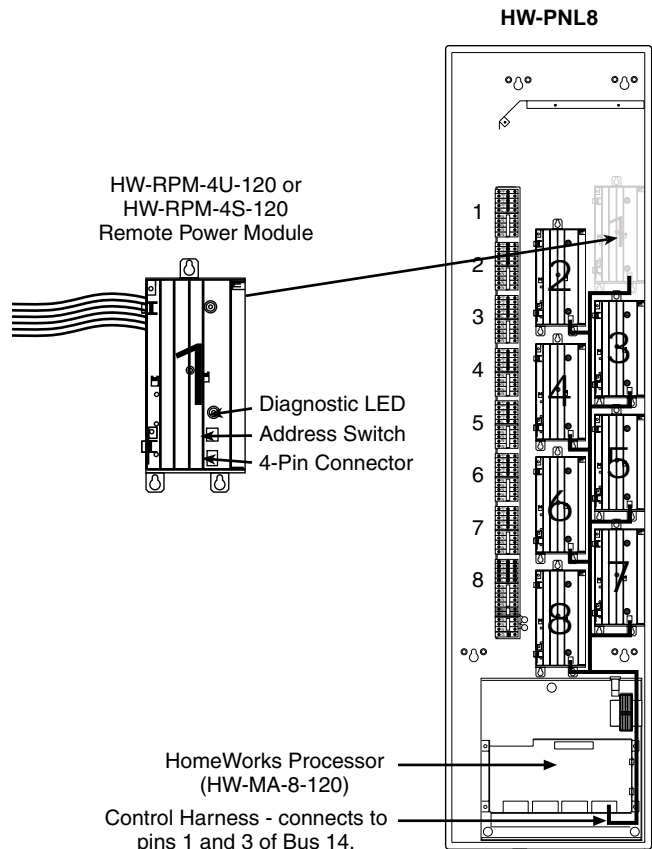
Other countries call:

Tel: (610) 282-3800

Fax: (610) 282-3090

Visit our Web site at www.lutron.com

Figure 3 - Mounting Location in HW-PNL8



Asian Headquarters

Lutron Asuka Corporation K.K.
 2nd Floor, Kowa Shiba-Koen Bldg.
 1-11 Shiba-Koen 1 chome
 Minato-ku, Tokyo
 105-0011 Japan
TOLL FREE: (0120) 083 417 (Japan)
 Tel: (3) 5405-7333; International 81-3-5405-7333
 Fax: (3) 5405-7496; International 81-3-5405-7496

Hong Kong Sales Office

Tel: 2104-7733; International 852-2104-7733
 Fax: 2104-7633; International 852-2104-7633

Singapore Sales Office

Tel: 220-4666; International 65-220-4666
 Fax: 220-4333; International 65-220-4333

Warranty

Lutron will, at its option, repair or replace any unit that is defective in materials or manufacture within two years after the purchase. This warranty is in lieu of all other warranties, express or implied, and the implied warranty of merchantability is limited to two years from purchase. This warranty does not cover the cost of installation, removal or reinstallation, or damage resulting from misuse, abuse, or damage from improper wiring or installation. This warranty does not cover incidental or consequential damages. This warranty gives you specific legal rights, and you may have other rights which vary from state to state. Some states do not allow the exclusion or limitation of incidental or consequential damages, or limitation on how long an implied warranty may last, so the above limitations may not apply to you.

LUTRON®

Lutron Electronics Co., Inc.
 7200 Suter Road
 Coopersburg, PA 18036-1299
 Made and printed in the U.S.A. 6/99 P/N 043-006 Rev. C