

## ARCHITRAVE - STYLE KEYPADS

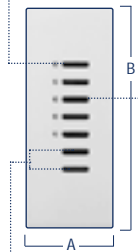


All on/All off

### HWI-KP5-DN

A = 1.33" (34mm)

B = 4.50" (114mm)



All on/All off

### HWI-KP5-DW

A = 1.80" (46mm)

B = 4.50" (114mm)

## FEATURES

- Each button on a Keypad may be programmed to perform any one of many different functions, including
  - turning individual scenes/zones on or off
  - turning selected scenes/zones on or off as a group
  - raising or lowering selected scenes/zones as a group
- Small LEDs beside each button show the status of the scene or lighting zone programmed to that button
- Architrave-Style Keypads feature two buttons without LEDs, typically used as all on and all off function buttons

**NOTE:** Lutron recommends that Keypads be mounted close to eye level (between 52" and 60" high)

## MODEL

## NUMBER OF BUTTONS

HWI-KP5-DN

Five with LEDs, plus two without LEDs

HWI-KP5-DW

Five with LEDs, plus two without LEDs

## ARCHITRAVE - STYLE KEYPAD COLORS



### STANDARD METAL FINISHES:

White Matte with White Buttons, Bright Brass with Black Buttons

### SPECIAL ORDER MATTE COLORS WITH WHITE BUTTONS:

Beige, Ivory, Gray, Taupe

### SPECIAL ORDER MATTE COLORS WITH BLACK BUTTONS:

Brown, Black

### SPECIAL ORDER FINISHES WITH BLACK BUTTONS:

Antique Brass, Satin Brass, Bright Chrome, Satin Chrome, Bright Nickel, Satin Nickel, Antique Bronze

Custom colors also available to match paint, wallcoverings, etc.

For more detailed technical information on these and other HomeWorks Interactive components, please consult the HomeWorks Interactive Technical Reference Guide.

©Lutron Electronics Co., Inc.  
7200 Suter Road, Coopersburg PA 18036  
Printed in U.S.A. 9/00 P/N 366-893

 **LUTRON**<sup>®</sup>  
www.lutron.com